

**Kowa**

Non-mydratiatic Fundus Camera



Technology for Life Science

Kowa

***nonmyd 7***

*6.1 Mega-pixel Resolution  
20 or 45 Degree Angles*





Technology for Life Science



**Kowa nonmyd 7, an easy-to-use fundus camera with the capability of 6.1 Mega-pixel high-resolution photography. Sharper, clearer images will guarantee outstanding performance in clinic scenes.**

**The all-in-one compact, lightweight digital fundus camera employs an advance design in compact technology.**

This cost effective design uses intuitive ergonomic operations to make getting photographic results easy.

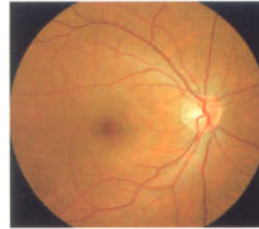


**Kowa nonmyd 7 utilizes a 6.1 mega pixel digital camera.** The high resolution digital camera offers high quality images and allows easy image storage.

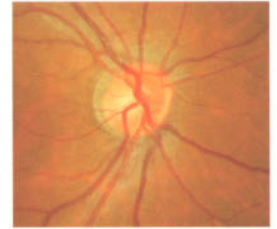
**The easy to attach USB computer interface makes set-up and operations plug and play.**

Kowa nonmyd 7 is ideally suited to be used with portable notebook computers and the Kowa Portable VK-2 digital imaging system. Regardless of the volume of photographs taken, nonmyd 7/VK-2 lets you store, recall and compare data with ease that is hard to believe. Furthermore, Kowa nonmyd 7 is flexible to any network environment.

**Powerful 2 angles (optical)**

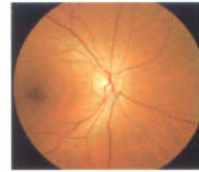


45 Degrees angle

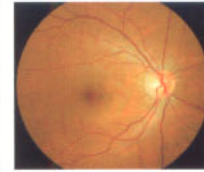


20 Degrees angle

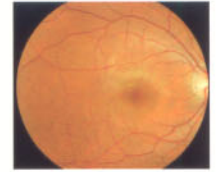
**3 internal fixation targets**



Nasal



Central



Temporal

**Specifications**

Picture angle	45° /20° Two angles (optical)
Working distance	30 mm (distance of examined eye to front end of objective lens)
Effective pupil diameter	φ4 mm (Small pupil mode : φ3.7 mm)
Compensation range of examined eye	Without correction : -15 m <sup>-1</sup> (D)~+13m <sup>-1</sup> (D) -compensation : -11 m <sup>-1</sup> (D)~+33m <sup>-1</sup> (D) +compensation : +10 m <sup>-1</sup> (D)~+40m <sup>-1</sup> (D)
Focusing	Split luminous bars coincidence
Working distance adjustment	2-luminous dots indication type
Internal fixation lamp	4 fixed dots switching type
External fixation lamp	Red light, blinking (option)
Monitor	5.5-inch LCD
Auto OFF function	With time setting function
Optical head base moving distance	Movable 40 mm forward/backward, 100 mm leftward/rightward Movable 30 mm vertically (electric)
Chin rest moving distance	Movable 60 mm (electric)
Power supply	Input : AC100 V - AC240 V 50/60 Hz Power consumption : 200 VA (normal)/ 250 VA (maximum)
Dimensions	310 (W) x 504 (D) x 548 (H) mm
Weight	21kg (Excluding the attached digital camera back)

Specifications and appearances are subject to change without notice.

Distribution name : KOWA nonmyd 7



**Kowa** *Kowa Company, Ltd.*

**World Sales Headquarters**

4-14, Nihonbashi-honcho 3-chome, Chuo-ku, Tokyo 103-8433 Japan  
Phone: 81-3-3279-7331 Facsimile: 81-3-5255-7516  
URL: <http://www.kowa.co.jp/e-life/>

**Hamamatsu Factory**

3-1, Shinmiyakoda 1-chome, Hamamatsu City,  
Shizuoka Pref., 431-2103 Japan

**Kowa Europe GmbH**

Immermannstrasse 43B  
40210 Düsseldorf F.R.Germany  
Phone : 49-211-1793540  
Facsimile : 49-211-161952  
URL : <http://kowa-europe.com/>

**Kowa Optimed, Inc.**

20001 S. Vermont Ave. Torrance,  
CA 90502, U.S.A.  
Phone : 1-310-327-1913  
Facsimile : 1-310-327-4177  
URL : <http://medical.kowa.com/>



This catalog was made with 100% recycled paper Printed in Japan 0592500MA-1